



# PROCESS CONTROL SOLUTIONS

 **ACI CONTROLS**  
Performance that sets the standard



# WHO IS ACI CONTROLS?



## PROVIDING INNOVATIVE SOLUTIONS FOR PROCESS CONTROL APPLICATIONS

Founded in 1945, ACI Controls is a leader in the automated process control market, developing and implementing value add solutions for a wide variety of process control applications including the following variables: pressure, temperature, level, flow, analytical, combustion and filtration. Our scalable solutions enable customer facilities to operate more safely, efficiently and profitably. The Automation team boasts 50+ years of experience in the design, engineering and fabrication of customized industrial control panels that integrate seamlessly into our customer's existing process control platform. Among our core competencies:

- Engineering & Application Support
- Service
- Manufacturing and Assembly
- Industry Leading Products & Solutions



## ENGINEERING & APPLICATION SUPPORT

### PRODUCT SELECTION & APPLICATION ENGINEERING

Behind each of our products is an application engineer with formal factory training and years of experience. When you order from us, you are not just getting a product, you are getting an engineering consultant dedicated to your satisfaction.

### DRAWINGS

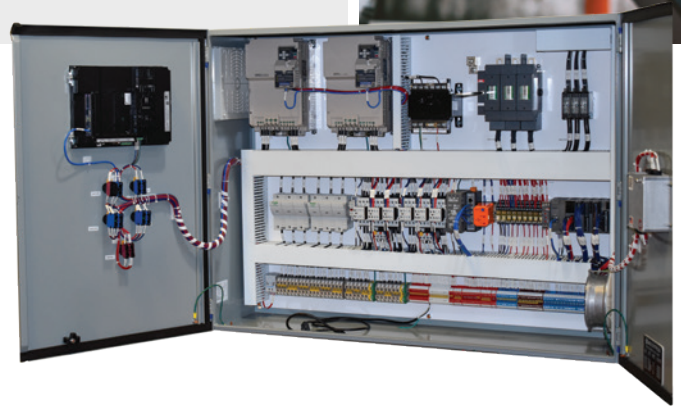
Mechanical and electrical drawings to customer standards meeting any revision of AUTOCAD.

### TRAINING

We work with our application engineering staff and with our supplier partners so you are well-trained on these applications, products and systems. We conduct training in our facility, on customer premises or online.

### LAB WORK

- Gauge and seal assembly
- Liquid fills
- Custom hose assemblies
- Pressure/Temperature transmitter set up and calibration
- Controller/PLC programming
- Kitting
- SS tags
- Tube bending
- Oxygen Cleaning



## MANUFACTURING & ASSEMBLY

### PANEL BUILDS

Design, build and program automation control panels for any application (UL508A Certified).

### ASSEMBLIES & CONVERSIONS

Our production staff can integrate (and calibrate) components from manifolds and transmitters to fittings, hoses and filters.

### CUSTOM FABRICATIONS

We offer turnkey solutions including drawings, component selection, sourcing, assembly, inspection and quality control.

### VALVE AUTOMATION

We offer the complete package (control valve, actuator and instrumentation) that is assembled, tested and ready for installation.

- Standard and custom valve configurations
- Complete documentation including engineering drawings





# LEADING INDUSTRY PRODUCTS & SOLUTIONS

Mechanical Products	Pages 4-5
Instrumentation	Pages 6-7
Filtration	Page 7
Combustion	Page 8
Valves	Pages 9-10
Automation	Pages 10-11

## TROUBLE SHOOTING & FIELD SERVICE

### PROVIDING REMOTE, ON-SITE, COMMISSIONING & CALIBRATION SERVICES

Our experienced field service technicians have worked in a wide variety of industries to improve customer efficiency, safety, productivity and profitability. ACI Service Solutions helps businesses scale-up and down, allowing for a controlled cost structure and minimal overhead. Each service technician is factory trained and fully prepared to troubleshoot, diagnose and repair equipment while in the field; they also provide the documentation and data customers require to maintain their certifications.

ACI Controls is accredited by A2LA to ISO/IEC 17025:2017. This ISO standard, used by testing and calibration laboratories, validates ACI's ability to consistently produce accurate results. Our test and calibration results have been through rigorous management and technical requirements so you can always be confident working with ACI Controls.

#### PROJECT MANAGEMENT

Our team oversees component selection, drawing creation, procurement, production and logistics to ensure your project is completed on time and under budget.

#### REMOTE SUPPORT

Web-enabled monitoring and automated paging capabilities provide remote access and alarm notification.

#### INSTALLATION

On-site set-up of designated control systems.

#### REPAIR/REPLACEMENT

Of existing process equipment with a unique understanding of its characteristics or replacement of unrepairable units.

#### CALIBRATION

Verification, calibration, and documentation of all process control equipment to manufacturer specifications.

#### WIRELESS SURVEYS

By offering preinstallation testing and surveys, we reduce risk by utilizing the most powerful wireless instrumentation, networking and SCADA to optimize your wireless data acquisition system.

#### CONFINED SPACE ENTRY

OSHA qualified and trained for confined space entry projects.

#### PROGRAMMING

PLC's, controllers, SCADA systems, HMI's and most packaged software.

- VFD Start up

#### COMBUSTION

- Industrial furnace and oven service
- Control system design, engineering and installation
- Energy audits
- Combustion tuning and repair
- Gas train design, assembly and testing
- Burner management control systems

#### HEAT TRACE SOLUTIONS

- Sizing
- Product selection
- System layout
- Isometric drawings
- Design, installation and commissioning



# MECHANICAL DIVISION

## PARKER HANNIFIN

Parker Hannifin appointed ACI Controls an official Instrumentation Solution Center based on criteria related to technical support, operational excellence, and customer service. Together we work to solve customer challenges and provide highly engineered flow control components and systems ranging from basic compression fittings, valves, regulators, and flow controllers, to compact stream switching systems, modular fitting and valve packages, custom assemblies, and gas management and delivery systems.



### PARKER INSTRUMENTATION PRODUCTS DIVISION

#### Instrumentation Products Division

Compression fittings (CPI™, Alok®)

MPI™ medium pressure (6,000-15,000psi) fittings and valves

Instrumentation valves – check, relief, metering, ball, needle, plug and filters

#### Instrumentation Products Division – Europe

Phastite® Fittings

Pro-bloc valves

CCIMS® Manifold Valves

#### Autoclave Engineers

High pressure (up to 150,000 psi) tubing, fittings, valves and pumps

#### Phoenix Precision

Block and bleed valves

Instrument manifolds

#### PGI International

2, 3 and 5 valve manifolds

Block and bleed valves

Thermowells and probes

#### Quick Coupling Division

Brass, steel and stainless steel quick couplings for metal and plastic tubing

#### Texloc

Thermoplastic and fluoroplastic tubing and fittings PTFE, FEP and PFA tubing



#### Parflex

Hydraulic, pneumatic hose and tubing

Fittings: SAE, JIC, 37/45 degree flare

#### Porter

Digital and analog mass flow controllers for gas service

Rotameters, Metering valves

Proportional control valves

#### Bestobell

Bronze and stainless steel globe, ball, relief and check valves for cryogenic service

#### Veriflo Division

Stainless steel valves and regulators

Stainless steel gas delivery systems

Ultra-high purity stainless steel fittings and CGA's

Flow controllers

Fluoropolymer valves and fittings

Fluoropolymer chemical delivery products (CASY's)





## AMETEK

### Mansfield & Green

Diaphragm seals

### US Gauge

Pressure/temperature gauges



## ASCO

Solenoid valves



## DWYER

Low pressure gauges, switches, manometers/rotameters and flow meters



## BS&B

### Rupture Disk Devices

Rupture disks including reverse buckling, forward acting and graphite

### Custom-Engineered Products

Pressure relief devices developed for OEM, aerospace, energy and defense applications

### Specialty Valves

Buckling pin pressure relief devices from 1" to 60"

### Flamesaf™

Flame arresters

Detonation arresters

Pressure/vacuum vents

## BEHRINGER

Pipe and tube supports

Clamps, hangers and trays

Height adjusters



## MID-WEST INSTRUMENT

Differential pressure gauges



## REOTEMP INSTRUMENTS

Pressure gauges, bimetal thermometers, diaphragm seals

Thermowells, Thermocouples, RTD's



## SVF FLOW CONTROLS, INC.

Manual and actuated ball valves from 1/4" - 12" (NPT and flanged)

Economy, fire-safe, high pressure and sanitary



## TAYLOR

Laboratory grade, bi-metal and industrial thermometers

Pressure calibrators



## EGMO

### MaxPURE

BioPharm/Sanitary (ASME BPE) fittings, tubing and manifolds



### SciMAX

Semiconductor grade tubing, fittings, laterals and manifolds



## UNITED ELECTRIC CONTROLS

Pressure, DP, temp switches

One Series pressure, DP, temp transmitters and switches

### EXCELLA

2-wire electronic pressure, DP, temperature switch

### VANGUARD

WirelessHART® gas detector with 5-year battery life is ideal for monitoring toxic and combustible gases without the need for costly, fixed wiring.

## STAINLESS STEEL TUBING

Instrument-grade tubing





# INSTRUMENTATION DIVISION



## AMETEK PMT DIVISION

Pressure transducers



## AZBIL

### Azbil North America

2 wire and 4 wire magmeters

Vortex flow meters



## BADGER METER FLOW INSTRUMENTATION

Coriolis mass flow meters

Electromagnetic meters

Impeller/Turbine meters

Ultrasonic meters

Vortex meters

Variable area meters

Differential pressure meters



## ENERGY FLOW SYSTEMS, INC.

Orifice plates, venturi tubes, meter tubes, flow nozzles, condensate pots



## METTLER TOLEDO – PROCESS ANALYTICS DIVISION

### Ingold & Thorton- Leading Pure Water Analytics

pH/ORP

Conductivity

DO, CO<sub>2</sub>, TOC

Turbidity

Sensors, Controllers and Transmitters

Gas oxygen sensors and analyzers

Sodium and silica analyzers

Microbial monitoring

ISM smart sensor technology



## MICHELL/ROTRONIC INSTRUMENTS

Dewpoint, CO<sub>2</sub>, O<sub>2</sub>, Relative Humidity and Temperature probes, transmitters and analyzers



## PYROMATION

RTDs, thermocouples and thermowells



## THERMON

Constant wattage, power limiting, self regulating, mineral insulated heating cables

Tank and vessel heating panels

Control and monitoring equipment

Instrument tubing bundles

Termination kits and accessories



## MAGNETROL

Guided Wave Radar continuous level transmitters

Single and Dual Point ultrasonic contact level switches

Ultrasonic, non-contact, continuous level

Capacitance continuous level transmitters

Capacitance single point switches

Caged, side mounted, and top mounted buoyancy float switches

Displacer continuous level controllers

Displacer single and multi-point switches

Through-air radar transmitters

Thermal Dispersion mass flow transmitter

Thermal Dispersion flow switches

Vibrating rod level switches for solids



## ORION

Magnetic level indicating chambers offered as a standalone package, or supplied with Guided Wave radar in a single or dual chamber design

Jupiter Magnetostrictive continuous level transmitter



## PRECISION DIGITAL

Digital panel meters and annunciators



## SIERRA INSTRUMENTS

Mass flow controllers

Thermal mass flow meters

Ultrasonic flow meters

Vortex flow meters

Flow conditioners

Flow and level switch

Flow calibrators

## Honeywell

### HONEYWELL Process Solutions

Process Controllers and Setpoint Programmers

Pressure, Temperature, MultiVariable and Flow Transmitters

Industrial Wireless Transmitters and Networks

Paperless Recorders and Data Acquisition Solutions

Hybrid Controllers, PLCs and RTUs

SCADA and Supervisory Software



## FILTRATION DIVISION



### PARKER BALSTON

High-purity compressed air filter assemblies

Compressed air dryers

Nitrogen generators

Full compliance with FDA and SQF requirements



### PARKER FINITE

Compressed air and gas filters

Point of use filters

Coalescing/Particulate filters

CNG and natural gas filtration



### PARKER HYDRAULIC FILTRATION

Hydraulic cartridges and vessels



### PARKER PROCESS FILTRATION (PECO)

Parker Hyperchill (plus) water chillers

High-efficiency, wound and pleated cartridges



### PARKER AIRTEK

Desiccant air dryers

Inline high-temp filters

Water separators



### PARKER DOMNICK HUNTER

Compressed air filters/dryers

Industrial gas generators

Oil/Water separators

# COMBUSTION DIVISION

**Honeywell**  
Honeywell Thermal Solutions

## HONEYWELL

### Thermal Solutions

Commercial Combustion  
Industrial burner and boiler control systems  
Valves and actuators  
Flame safeguard, fuel train components

**Honeywell**  
ECLIPSE

### Honeywell Eclipse

Burners, recuperators, heat exchangers  
Fully engineered combustion systems

**HAUCK**

### Hauck

Burners and integrated combustion solutions  
for the asphalt and fracking industries

**krom  
schroder**

### Krom Schroder

Gas combustion and burner management  
control systems  
Filters, regulators  
Safety shut-off and control valves

**Honeywell**  
MAXON

### Maxon

Gas/Oil burners and valves  
Hazardous area shut off valves  
Low and ultra low NOx burners

**elster**

### Elster

Gas meters, regulators and volume converters  
Flow computers, data loggers and piping systems

**EXO**  
High Performance Heat Exchangers

### Exothermics

High-efficiency heat exchangers

**cincinnati  
fan**

## CINCINNATI FAN

Centrifugal blowers and fans  
Axial fans

**Spencer**

## SPENCER TURBINE

Engineered blower and vacuum systems  
Gas boosters

**MAXITROL**

## MAXITROL

Gas regulators  
Gas filters

**Equimeter**  
INCORPORATED

## EQUIMETER/SENSUS

Gas regulators  
Gas meters  
Turbine gas meters  
Diaphragm valves  
Ultrasonic gas meters  
High-pressure relief valves  
Water meters

**nycb**

## NEW YORK BLOWER COMPANY

Combustion Air Blowers

**Pietro  
Fiorentini**

## PIETRO FIORENTINI

High/low capacity governor regulators  
Gas regulators  
Slam shut devices  
High-pressure regulators  
Service regulators (NYS)  
Overpressure devices

**ROMET**  
**DRESSER**  
Roots

## ROOTS ROTARY/ROMET

Gas meters





# VALVE DIVISION



## TRIMTECK

Metal seated, high pressure/temperature control valves

CLVI shut off up to 4500 PSI



## A-T CONTROLS-TRIAC

Threaded, flanged, socket weld, & tri-clamp 2 piece and 3 piece ball valves up to 12"

Soft and metal seated to ANSI CL600

High performance and lined butterfly valves to 24" CL300

Complete electric and pneumatic actuator assemblies.

FM approved assemblies, isolation valves, cryogenic 3 piece ball valves

1-2 week deliveries on most items



## ADVANCED INDUSTRIAL TECHNOLOGIES (AIT)

Pneumatic valve actuators

90/180 degrees

Rack and pinion both double acting and spring return

Heavy duty, scotch yoke valve actuators



## SCV

Trunnion mounted ball valves to 48" CL2500

Lubricated plug valves

Full port swing checks

Piston check valves to 24", CL2500

Bolted bonnet globe valves

Floating ball valve to 12", CL1500



## BADGER METER/RESEARCH CONTROL VALVE

Linear globe control valves to 60,000 PSI

¼" to 2" sizes, flange, threaded and tri-clamp

Cryogenic and sanitary options

Pneumatic and electric actuators

Digital valve positioners



## TAYLOR VALVE TECHNOLOGY

Conventional spring operated relief valves

Pilot operated relief valves

Manual and automated choke valves

UV and NB Code stamped



## UNION TECH MANUFACTURING

Metal seated, high pressure/temperature ball valves

CLVI shut off up to 4500 PSI



## CHAMPION VALVE

Swing, double door and nozzle valves

Silent check valves

ANSI B16.34 and API 607 certified



## LADISH/SMITH VALVE

Metal seated, high pressure/temperature ball valves  
CLVI shut off up to 4500 PSI

SST OSY gate, globe, check and ball valves to 1500 psi

SST cryogenic ball valves



## GEMU GROUP

**Specialty valves, measurement and control systems for the following markets:**

Pharmaceutical and biotechnology

Semiconductor, microelectronics and battery production

General industrial including power generation, chemical process and water treatment



## RUB, INC.

Cast Brass Ball Valves to 2" NPT/SW

Cast SST Ball Valve to 4" NPT

Complete line of electric and pneumatic actuators

3 way and 4 way brass valves

Needle valves



## INLINE INDUSTRIES

SS floating ball valves in 1, 2 and 3 piece design

Tank bottom and sanitary valves

High-purity ball valves for biopharma applications



## QRC VALVES

Newco cast and forged gate, globe and check valves

Douglas Chero forged steel gate

TBV-critical service ball valves



## CNC FORCE

Metal seated, high pressure/temperature ball valves

CLVI shut off up to 4500 PSI

# AUTOMATION DIVISION



## DRIVE SYSTEMS

Design, engineering and fabrication of custom industrial control panels

UL698a Industrial Control Panels relating to hazardous duty locations (NRBX)

Control Panel Assemblies for use in hazardous locations (NNNY)



## LEESON ELECTRIC

AC and DC motors



## YASKAWA

Variable frequency drives



## SIMPSON ELECTRIC

Digital and analog panel meters



## TE CONNECTIVITY

Entelec terminal blocks



## ABB AUTOMATION AND CONTROLS

NEMA, UL and CSA approved industrial products

Motor control and protection devices

Mini breakers, molded case breakers and fuse holders

Contactors, motor starters, soft starters

Electronic and mechanical relays

Power supplies, sensors, timers, control relays, circuit breakers



## THOMAS & BETTS

Wire and cable connectors

Trays, Fasteners, terminations, fittings

Power and high voltage controls

Conduit systems, lighting, enclosures



## IDEC

PLCs

HMIs, Relays, Sockets, Timers, Power Supplies, Machine Safety



## EATON CORPORATION

Wiring, push buttons, relays, lighting, mini breakers and molded case breakers

PLCs

Electrical distribution systems

Motor starters



## PFANNENBERG

Filter fans, cooling units, industrial air conditioners

Chillers, heat exchangers

Stack lights, horns/sirens



## MERSEN ELECTRICAL POWER

Fuses, fuse holders, surge protection, low-voltage switches

Power distribution blocks



## LITTELFUSE

Fuses, Fuse blocks, holders and accessories



## HAMMOND POWER SOLUTIONS

General purpose dry type transformer

Auto and drive isolation transformers

Drive isolation transformers



## STERLING ELECTRIC

Stainless steel motors ranging from ¼ to 20 horsepower

Stainless steel reducers ranging from sub-fractional inputs to 5 horsepower

Single and double reductions 5:1 through 3600:1 ratio



## HAMMOND ENCLOSURES

Industrial enclosures and accessories



## LENZE

VFD's, inverters, motors, gearboxes



## PARKER DRIVES AND AUTOMATION

DC and AC variable speed drives  
 Stand alone and systems drives  
 Micro drives  
 V/Hz, open loop and closed loop vector drives



## WEG MOTORS

IEC, NEMA and general purpose AC motors  
 DC motors  
 Gearboxes, Gearmotors and Softstarters



## RITTAL

Industrial enclosures  
 Industrial climate control





## ORDER ONLINE!

[www.aci-controls.com](http://www.aci-controls.com)

- Shop online with customer specific pricing
- View recent orders and quotes, purchase history (includes online, offline, and EDI orders)
- Quick order and quote using quick pad and spreadsheet upload
- Track shipments
- View back orders
- Download invoices and statements

### SAME DAY SHIPPING

All of our stocked products are shipped same day if ordered before 3 p.m.

### SUPERIOR TECHNICAL SUPPORT & CUSTOMER CARE

Our application engineers are always ready to help select your product. Just call, email, or click our online chat - no waiting for answers.

### VALUE-ADDED SERVICES

Whether you need a custom panel, an assembly, calibration, or managed inventory, consider us a partner when it comes to instrumentation/process control technology.

### ORDER YOUR WAY

Order ONLINE - [www.aci-controls.com](http://www.aci-controls.com).  
Fast Shipping or Warehouse Pick-Up (Buffalo Area)

CALL: (800)-333-7519

E-MAIL: [info@aci-controls.com](mailto:info@aci-controls.com)



## OUR LOCATIONS

### BUFFALO, NY, HEADQUARTERS

10 French Road  
Cheektowaga, NY 14227  
PH: (800)-333-7519  
E-MAIL: [info@aci-controls.com](mailto:info@aci-controls.com)

### SYRACUSE, NY

5604 Business Avenue  
Cicero, NY 13039

### BINGHAMTON, NY

1109 Monroe Street #4  
Endicott, NY 13760

### ALBANY, NY

650 Franklin Street,  
Suite 306  
Schenectady, NY 12305

**PITTSBURGH, PA  
CHARLESTON, WV  
RICHMOND, VA**



Performance that sets the standard